

# MOVE ON UP

## June 2024 Newsletter



A half-termly newsletter from the Move On Up team with information about transitions, relevant events, open days, organisations and activities, and creative activities to help build the confidence of young people transitioning into adult community services.



### Transitions: Information Round-Up

For our final newsletter of the year, we wanted to put all of the most useful links and contacts from the previous newsletters in one place. As always, if you have any further questions about the transition and referral process, please do get in touch using the contact details at the end of this newsletter.

#### Bradford Council: Adult Social Care

On the Bradford Council website, you can find out more about what care and support is available, how to get a care needs assessment, and how financial assessments are calculated.



**Website:** [www.bradford.gov.uk/adult-social-care/adult-social-care](http://www.bradford.gov.uk/adult-social-care/adult-social-care)



#### Preparation for Adulthood Team

The Preparation for Adulthood Team support young disabled people age 16 - 25 years old to access appropriate services and activities.



**Website:** [www.bradford.gov.uk/adult-social-care/living-independently/preparation-for-adulthood](http://www.bradford.gov.uk/adult-social-care/living-independently/preparation-for-adulthood)



**Phone:** 01274 435750

#### Bradford Local Offer

The Bradford Local Offer is mainly aimed at families and children with Special Education Needs and/or Disabilities (SEND), however, there is information about services for young people aged up to 25 years old.



**Website:** [localoffer.bradford.gov.uk/kb5/bradford/directory/home.page](http://localoffer.bradford.gov.uk/kb5/bradford/directory/home.page)



**Email:** LocalOffer@bradford.gov.uk



**Phone:** 01274 439261

## Connect to Support, Bradford District

Connect to Support has information for adults with support needs about services and support, including a community activity directory and a social care directory.



**Website:** [bradford.connecttosupport.org](http://bradford.connecttosupport.org)

## Bradford Council: Paying for support

On the Bradford Council website, they have lots of information about paying for residential care, non-residential care and about direct payments, which is one option for managing your personal budget.



**Website:** [www.bradford.gov.uk/adult-social-care/paying-for-support/paying-for-support](http://www.bradford.gov.uk/adult-social-care/paying-for-support/paying-for-support)

## Bradford Council Independence Advice Hub

The Independence Advice Hub is the first point of contact for accessing support from Adult Social Care in Bradford Council. You can call them, or fill in the online form.



**Website:** [onlineforms.bradford.gov.uk/ufs/contact\\_us\\_social\\_services.eb?ebd=0&ebp=10&ebz=1\\_1719415735315](http://onlineforms.bradford.gov.uk/ufs/contact_us_social_services.eb?ebd=0&ebp=10&ebz=1_1719415735315)



**Phone:** 01274 435400

## Carers' Resource

“Carers' Resource exists to support unpaid carers. We provide information, advice and support to carers, to the people they care for and to professionals who work with them.”



**Website:** [www.carersresource.org](http://www.carersresource.org)



**Phone:** 0808 501 5939

## Move On Up Resources

You can find our accessible organisations booklet and every edition of our Move On Up newsletter on our website.



**Website:** [www.purplepatcharts.org/move-on-up/#resources](http://www.purplepatcharts.org/move-on-up/#resources)



**Email:** [hannah@purplepatcharts.org](mailto:hannah@purplepatcharts.org) / [roisin@purplepatcharts.org](mailto:roisin@purplepatcharts.org)



**Phone:** 07547 401776 / 07715 411536

Scan the QR codes with your phone to be taken straight to each website!



# Events, Open Days and Opportunities

*Upcoming events, open days and opportunities which may be of interest for families, carers and the people you support.*



## **Bradford's Live Preparation for Adulthood Event**

Monday 8th July 2024, 10:00am - 5:00pm

The Hockney Room, Margaret McMillan Tower  
Prince's Way, Bradford BD1 1NN

Bradford is hosting its first Live Preparation for Adulthood event which will be your opportunity to meet and talk to the services and support available, to help you and your young person with SEND, prepare for adulthood.

You will learn about the 4 Preparation for Adulthood pathways and plan for the transition into adulthood, helping to support young people to be able to:

- stay well and healthy (Healthy Me)
- be a part of the community and have friendships (Social Me)
- achieve paid employment (Purpose Me)
- live independently and have housing options (Independent Me)

Book your ticket to attend:

<https://www.universe.com/events/bradfords-live-preparation-for-adulthood-event-tickets-79XL5M>

Email: [sendT&C@bradford.gov.uk](mailto:sendT&C@bradford.gov.uk)

# Organisations Spotlight:

## Sports / Outdoors



### IMAS - International Mixed Ability Sports, Bradford and Leeds



Mixed Ability is a social movement within sports, actively promoting inclusion and equality through a sense of belonging and membership to a group, team or club.

There are a variety of mixed ability sports groups: yoga, cycling, swimming, bowls, boxing, cricket, football, archery, rowing and rugby!

Website: [mixedabilitysports.org](http://mixedabilitysports.org)



### CTI2000 - Community Through Inclusion, Ilkley

We're a registered charity with qualified staff and a team of fantastic volunteers who provide adults with learning disabilities training and skills in gardening and horticulture. We have a beautiful, big allotment and an indoor space when the weather gets very wild! We run traditional craft activities too.

Website: [cti2000.org](http://cti2000.org)

### NEET - Northcliffe Environmental Enterprises Team, Shipley

NEET delivers learning opportunities, work placements and practical occupation within a community-based enterprise at Northcliffe Nurseries.

Website: [neetpeople.org](http://neetpeople.org)



Magpies

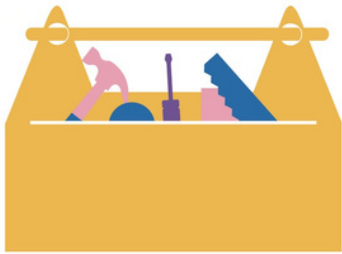
### Magpies, Halifax

We support and encourage adults with learning disabilities to lead fulfilling lives. We offer a fun and friendly learning environment, offering a wide variety of activities and opportunities including sports, arts, music, media, dance and much more.

Website: [magpies.org.uk](http://magpies.org.uk)



Find out further information about these organisations and more in our accessible organisations booklet, available at: [purplepatcharts.org/move-on-up/#resources](http://purplepatcharts.org/move-on-up/#resources)



## Transitions Toolkit: Challenging Yourself



*In each newsletter, we will share an activity from our transitions toolkit. Each activity is designed to develop a tool which can help young learning-disabled and autistic people feel confident in the face of change.*

**Positive affirmations are good things you say about yourself. Reminding yourself of what you have already achieved and your strengths can help you to face new challenges.**

Create a piece of artwork to express all of the great things about you and what you have achieved. It could be a piece of art, a song, a poem - whatever you like!  
You could do an acrostic poem of your name, create a poster, or change the lyrics of a song such as 'Standing in the Hall of Fame' by the Script.



## Contact the Move On Up Team

If you have a question about the information in the newsletter or about transitioning into adult services, you can contact the Move On Up team using the details below.

You can chat to us on the phone, via email, or arrange an in-person or online meeting:



**Hannah, Projects Manager**  
hannah@purplepatcharts.org  
07547 401776



**Róisín, Projects Assistant**  
roisin@purplepatcharts.org  
07715 411536